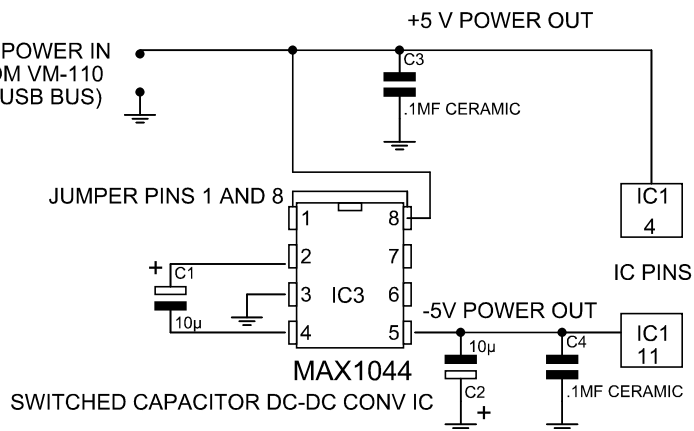
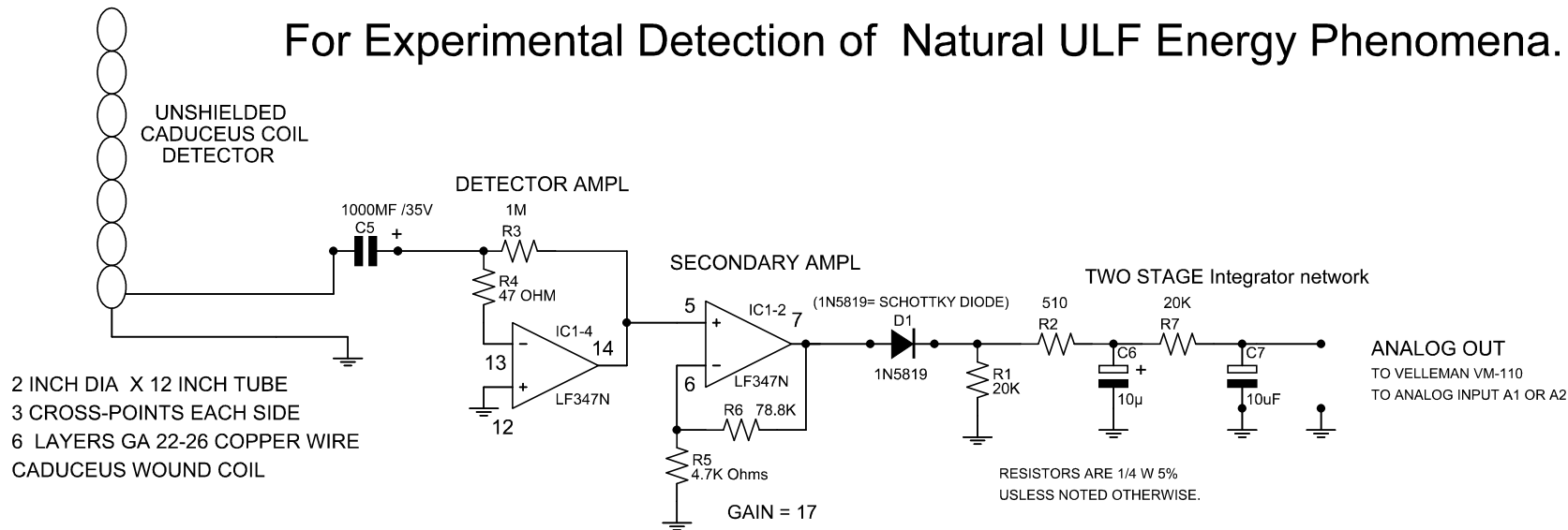


# For Experimental Detection of Natural ULF Energy Phenomena.



## ULTRA LOW FREQUENCY CADUCEUS DETECTOR CIRCUIT

THIS CIRCUIT IS DESIGNED FOR SCIENTIFIC USE  
IN THE DETECTION OF ULTRA LOW FREQUENCY MAGNETIC ACTIVITY.

IT IS DESIGNED TO BE INTERFACED WITH A VELLEMAN VM-110 / K8055  
A TO D AND PC USB INTERFACE BOARD AND TO USE REALVIEW  
2.0 OR 3.0 CHART RECORDER SOFTWARE BY ABACOM OR SIMILAR  
A TO D SYSTEMS AND SOFTWARE.

Tony Devencenzi / Peter Newton REV 04/21/2013