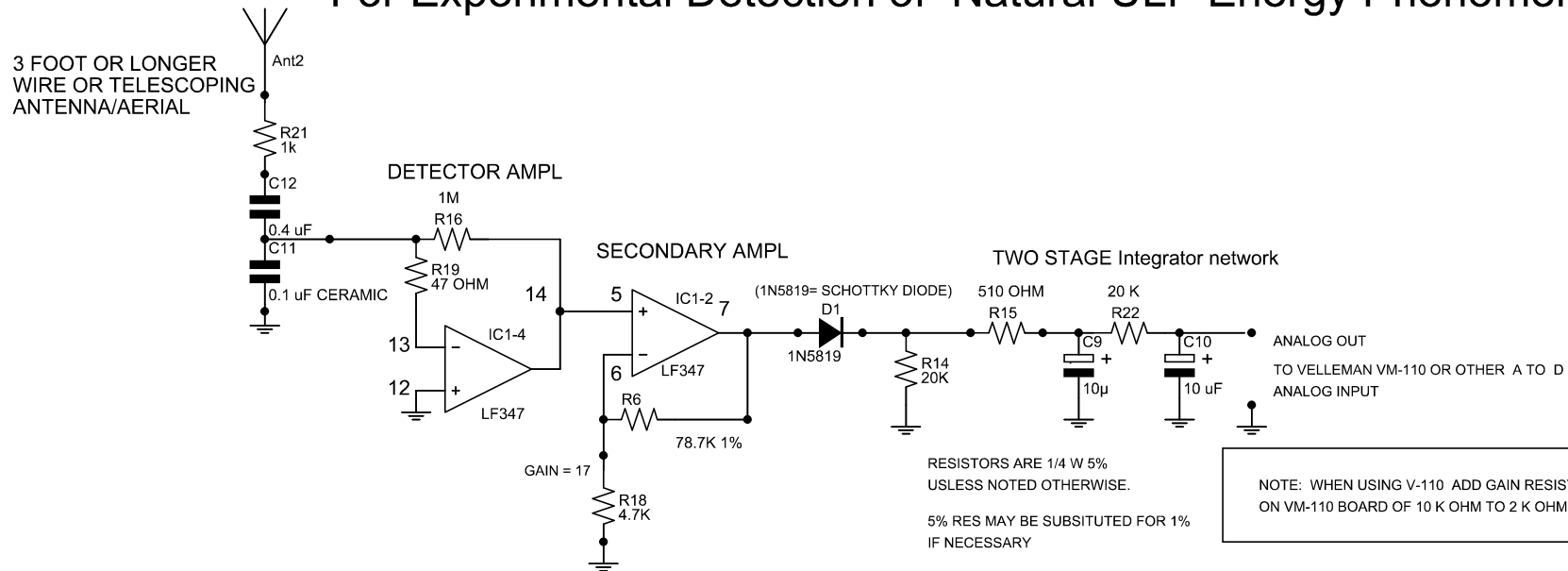
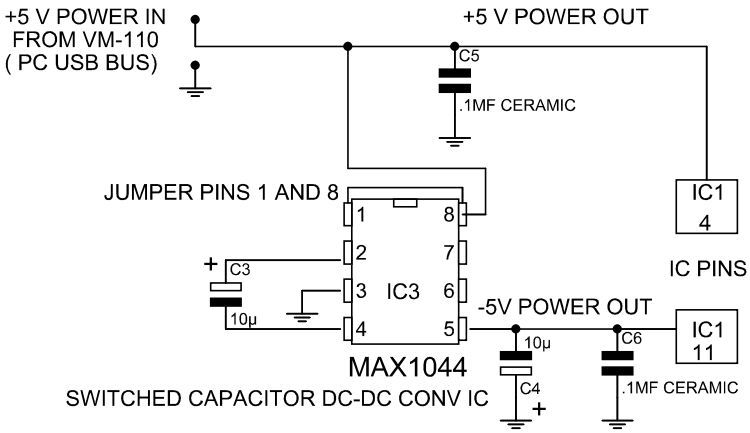


For Experimental Detection of Natural ULF Energy Phenomena



NOTE: WHEN USING V-110 ADD GAIN RESISTOR ON VM-110 BOARD OF 10 K OHM TO 2 K OHM FOR EXTRA GAIN



E-FIELD ANTENNA ELECTRON SENSOR WITH LONG TIME CONSTANT INTEGRATOR TWO-STAGE 10 UF OUTPUT CIRCUIT

THIS CIRCUIT IS DESIGNED FOR SCIENTIFIC USE IN THE DETECTION OF ULTRA LOW FREQUENCY ELECTRIC ACTIVITY

IT IS DESIGNED TO BE INTERFACED WITH A VELLEMAN VM-110 / K8055 A TO D AND PC USB INTERFACE BOARD OR OTHER A TO D UNITS AND TO USE F 3.0 CHART RECORDER SOFTWARE BY ABACOM OR OTHER SOFTWARE CHART THAT WILL WORK WITH THE A TO D CONVERTER USED.

Tony Devencenzi / Peter Newton