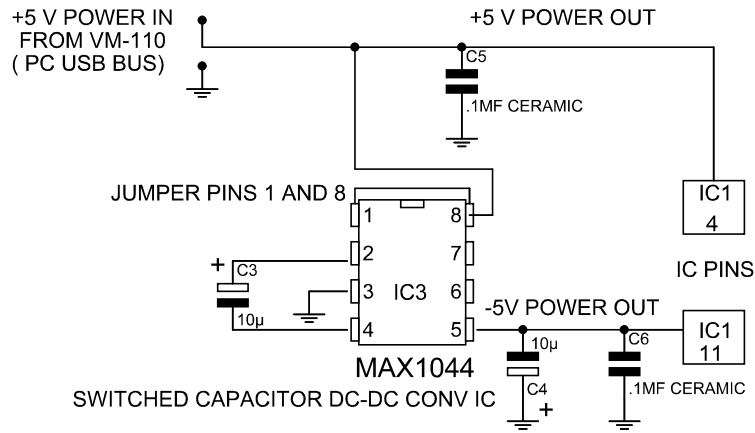


ULTRA LOW FREQUENCY AETHER-MAGNETIC DETECTOR CIRCUIT



THIS CIRCUIT IS DESIGNED FOR SCIENTIFIC USE IN THE DETECTION OF ULTRA LOW FREQUENCY MAGNETIC ACTIVITY AND THE STUDY OF THE BARKHOUSSEN EFFECT AND THE AETHER-MAGNETIC EFFECT.

IT IS DESIGNED TO BE INTERFACED WITH A VELLEMAN VM-110 / K8055 A TO D AND PC USB INTERFACE BOARD AND TO USE THE CUSTOM SOFTWARE WITTEN BY THE AUTHOR ON ABACOM PROFILAB EXPERT 4.0

(C) TONY DEVENCENZI 2009 frostalarm@att.net